

— Ship Fact Sheet —

AMAMORA, AMALEA, AMAKRISTINA, AMAVIOLA, AMASTELLA



AMAKRISTINA

Primarily cruising the Danube and Rhine, AmaWaterways' twin balcony ships represent some of the newest vessels in our fleet. Heated pools with a swim-up bar provide a tranquil environment for viewing stunning mountains and spired skylines. Plus, spacious staterooms afford guests comfort and privacy to rejuvenate while still experiencing the magnificent scenery.



Main Lounge, AMAVIOLA

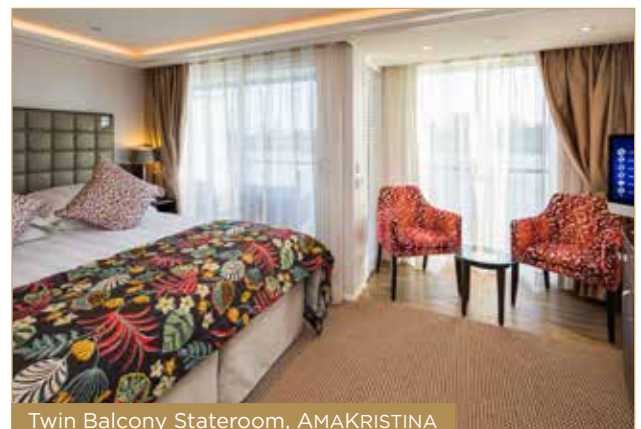
Included Features:

- ◆ Panoramic Lounge with bar, piano and dance floor
- ◆ Walking track, pool with swim-up bar, fitness room and bicycles for in-port exploration
- ◆ Complimentary Wi-Fi
- ◆ Hair salon and massage services*
- ◆ The Chef's Table specialty restaurant with tasting menu
- ◆ Breakfast and lunch buffets featuring regional cuisine; multi-course dinners made with fresh local ingredients
- ◆ Hand-selected wine, beer and soft drinks with meals—plus a Sip & Sail cocktail hour
- ◆ All-day tapas menu and afternoon tea; 24-hour coffee station
- ◆ Welcome Cocktail, Welcome Dinner, La Chaîne des Rôtisseurs Dinner, Captain's Cocktail and Gala Dinner

*Additional costs apply.

Stateroom Accommodations:

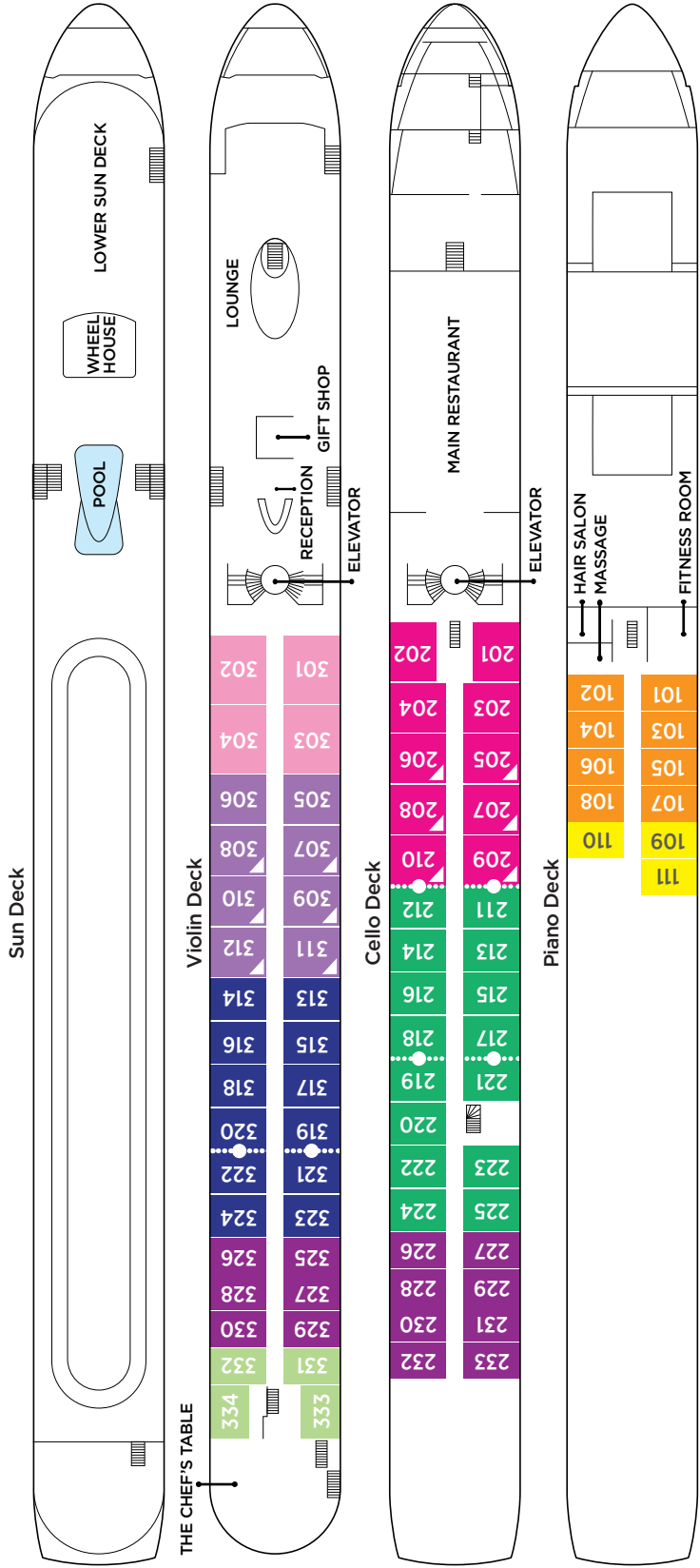
- ◆ All outside accommodations, most with revolutionary twin balconies
- ◆ Marble bathrooms, multi-jet showers, soothing bath products, cotton bathrobes, slippers and hair dryer
- ◆ Spacious suites (350 sq. ft.) with substantial sitting area, mini fridge, bathtub, separate shower, double sinks, and beds facing the river
- ◆ Generous closet and storage space with in-room safe
- ◆ Entertainment-On-Demand with high-speed Internet, movies, music and English-language TV
- ◆ Individually controlled air-conditioning
- ◆ Bottled water replenished daily
- ◆ Connecting staterooms and triple and quad occupancy available in select staterooms



Twin Balcony Stateroom, AMAKRISTINA

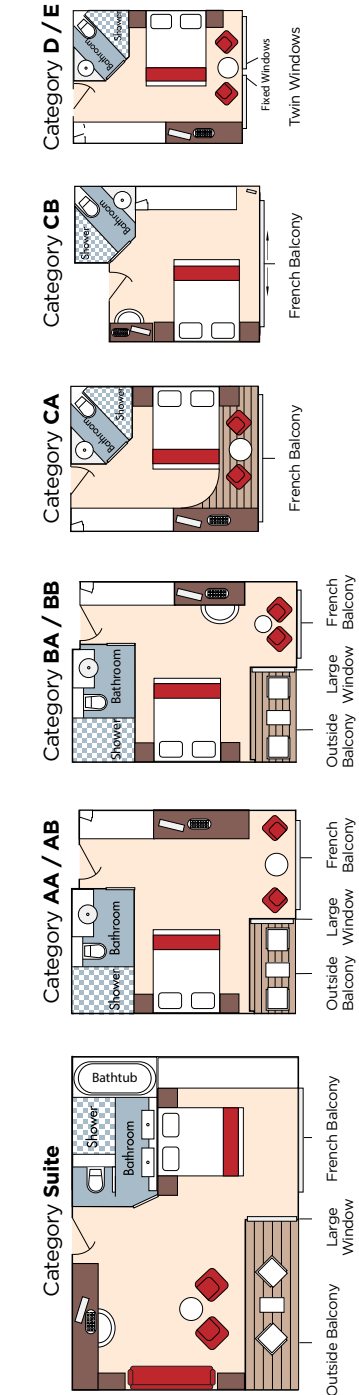
AMAMORA, AMALEA, AMAKRISTINA, AMAVIOLA, AMASTELLA

Technical Data
 Year Built:
 AmaMora 2019
 AmaLea 2018
 AmaKristina 2017
 AmaStella 2016
 AmaViola 2016
 Length: 443 ft.
 Width: 38 ft.
 Crew: 51
 Staterooms: 78
 Passengers: 156
 Registry: Switzerland



Elevator on AmaMora, AmaLea and AmaKristina reaches Main Restaurant, Lobby/Main Lounge and staterooms on Violin, Cello and Piano Deck.
 Elevator on AmaStella and AmaViola reaches Main Restaurant, Lobby/Main Lounge and staterooms on Violin and Cello Deck.

- Suite Violin Deck/French & Outside Balcony - 350 sq. ft.
- Cat. AA Violin Deck/French & Outside Balcony - 235 sq. ft.
- Cat. AB Cello Deck/French & Outside Balcony - 235 sq. ft.
- Cat. BA Violin Deck/French & Outside Balcony - 210 sq. ft.
- Cat. BB Cello Deck/French & Outside Balcony - 210 sq. ft.
- Cat. CA Violin & Cello Deck/French Balcony - 170 sq. ft.
- Cat. CB Violin Deck/French Balcony - 155 sq. ft.
- Cat. D Piano Deck/Fixed Windows - 160 sq. ft.
- Cat. E Piano Deck/Fixed Windows - 160 sq. ft.



..... Staterooms can become connecting by request.
 ▲ Up to triple occupancy.
 Note: Stateroom layouts are not to scale.
 Staterooms 201 & 202 are slightly modified